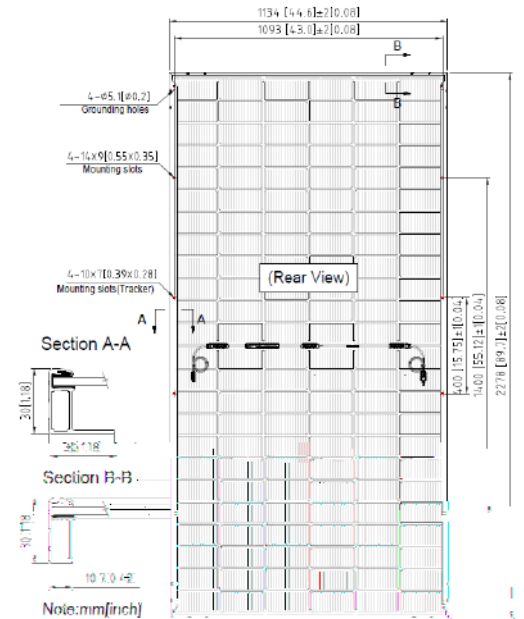




# Ultra V Pro STPXXS-C72/Nsh+ 580-600W

N	144 (6 × 24)
	2278 × 1134 × 30 (89.7 × 44.6 × 1.2 )
	32.0 (70.5 )
\	2.0 ± 2.0 (0.079 ± 0.079 )
	4.0 (-)350 / (+)160
	STP-XC4
	IP68 3
	-40 °C - +85 °C
	1500V DC (IEC)
	25 A
	0/+5 W
	(80 ± 5)%
	36 /
	864 /17.5
	2310 × 1120 × 1255 / 1202 /



	STP600S-C72/Nsh+		STP595S-C72/Nsh+		STP590S-C72/Nsh+		STP585S-C72/Nsh+		STP580S-C72/Nsh+	
	STC	NIMDT	STC	NIMDT	STC	NIMDT	STC	NIMDT	STC	NIMDT
(Pmax/W)	600	458	595	454	590	451	585	447	580	443
(Vmp/V)	43.13	40.80	43.02	40.70	42.91	40.60	42.79	40.50	42.68	40.40
(Imp/A)	13.91	11.20	13.83	11.16	13.75	11.10	13.67	11.04	13.59	10.98
(Voc/V)	51.94	49.40	51.81	49.30	51.68	49.10	51.55	49.00	51.42	48.90
(Isc/A)	14.64	11.80	14.56	11.74	14.48	11.67	14.40	11.61	14.32	11.54
(%)	23.2		23.0		22.8		22.6		22.5	

STC: 1000W/m<sup>2</sup>, 25 °C, AM=1.5, NIMDT: 800W/m<sup>2</sup>, 20 °C, AM=1.5, 1 m/s +/- 3%

585W

- & - 585W

	5%	15%	25%
STC (Pmax/W)	614	673	731
(Vmp/V)	42.79	42.79	42.89
(Imp/A)	14.35	15.72	17.09
(Voc/V)	51.55	51.55	51.65
(Isc/A)	15.12	16.56	18.00
(%)	23.7	26.0	28.3

(NIMDT)	42 ± 2 °C
(Pmax)	-0.29%/°C
(Voc)	-0.25%/°C
(Isc)	0.046%/°C

